

OVER THE FENCE



NEWS FOR NEIGHBORS
FROM THE
ARLINGTON HEIGHTS CIVIC
ASSOCIATION

SUMMER 2017

PLEASE JOIN US
FOR THE AHCA
QUARTERLY
MEETING

TUESDAY, AUGUST 8
AT 7 P.M.

PATRICK HENRY
ELEMENTARY
SCHOOL LIBRARY

OPEN CIVIC
ASSOCIATION
POSITIONS

LEARN MORE ON
PAGE 4



AHCA SUMMER MEETING: TUESDAY, AUGUST 8

Join us for AHCA's quarterly meeting at 7:00 p.m. on Tuesday, August 8, in the library of Patrick Henry Elementary School.

Special guests will join us. County Board Member John Vihstadt will discuss local and county-wide issues affecting our neighborhood, including the Transportation Plan and proposed changes at the Career Center site. Also joining us will be Arlington County Fair representatives and the County Liaison to the Fair, who will discuss what to expect when the fair comes to town in mid-August, and answer neighbors' questions and concerns.

You can pose questions and concerns ahead of time by emailing them to AHCA President Molly Calkins at molly.calkins.ahca@gmail.com. Our civic association quarterly meetings are open to members and non-members alike. Come find out what's happening and how to get involved.

FAIR WARNING: THE COUNTY FAIR IS COMING!

The Arlington County Fair returns to Thomas Jefferson Park in mid-August and will be open to the public from August 16 to 20. As in past years, the fair plans a neighborhood appreciation event a day ahead. We'll learn more at our August 8 civic meeting, when fair representatives will discuss the neighborhood event and other fair logistics such as residential parking permits and when to expect fair rides and equipment to be set up on TJ's fields.



ARLINGTON HEIGHTS CIVIC ASSOCIATION

PRESIDENT

Molly Calkins
molly.calkins.ahca@gmail.com

FIRST VICE PRESIDENT

Evan Farley
pinstriper4@yahoo.com

SECOND VICE PRESIDENT

Jay Moore
ahca.jay.moore@gmail.com

SECRETARY

Open

TREASURER

Scott Winn
arlingtonheightstreasurer@gmail.com

NCAC REPRESENTATIVE

Eileen Janas
emjmls@gmail.com

NCAC ALTERNATE

Open

CIVIC FEDERATION DELEGATES

Matthew Wavro
matt.wavro@gmail.com
Eileen Janas
emjmls@gmail.com
Jim Presswood
jim.presswood@gmail.com
Maureen Critchley
maurcrit@gmail.com

ALTERNATES:

Molly Calkins
molly.calkins.ahca@gmail.com
Stephanie Chong
stephaniechong@gmail.com

One position open

GARDEN TOUR A BIG HIT

On Saturday, June 10, neighbors gathered for one of our most popular events—the summer Garden Tour. Forty neighbors toured nine of the nicest home gardens in our neighborhood—including commercially-designed as well as amateur-designed gardens. The tour gathered at the home of Thomas and Melissa Ranier. He is an award-winning garden blogger and the author of “Planting in a Post-Wild World.”

The tour then crossed the street to the garden of tour hosts John and Rebecca Mashaw. Rebecca is a Master Gardener. Water

garden designer Marty Hays also participated, providing ideas and answering questions about water features.

Big thanks to the Mashaws for organizing and leading the event, and for including their own lovely garden on the tour. Special thanks to all the neighbors who invited the tour into their private gardens: Thomas and Melissa Ranier, David and Sharon Kinsman, Brian Seiling and Nanci Edwards, Andrea Hostettler, Ellen Taylor, Elizabeth Black, Maureen Sullivan, and Sean McNamara and Ken Poole.



With all the additions to and movement of schools in Arlington, it may be helpful to review what schools and programs we currently have on the Career Center campus.

First there is Patrick Henry Elementary school, which will house the school system's Montessori program, while our neighborhood K-5 students will move to the soon-to-be constructed elementary school on the campus of Thomas Jefferson Middle School.

Within the Arlington Career Center there are five programs: Career Technical Education program, which draws approximately 800 students from all of the APS high schools who come and go throughout the day; the full-time programs of the HILT Institute and Academic Academy, which comprise approximately 60 students each; PEP, which prepares cognitively challenged students to enter the work force; and Arlington Tech, which is the new STEM program which opened this year with approximately 40 students and will add an additional (minimum) 100 students next year.

Housed in the building situated perpendicular to the Columbia Pike

ARLINGTON COMMUNITY HIGH SCHOOL

BY VERONICA BARTLETT

library is Arlington Community High School (ACHS), formerly known as Arlington Mill High School. ACHS has been in existence since 1929 when it opened as an evening school. It became a high school continuation program before becoming fully accredited as an alternative high school in 2012. It was known as Arlington Mill High School before adopting the new name Arlington Community High School (ACHS) last spring.

Students at ACHS may take classes during the day or in the evening. ACHS is a fully accredited APS high school serving approximately 350 students who take semester-long courses while balancing work and family obligations in order to earn a full high school diploma, not a GED. Students, who must be at least 16 years of age and residents of Arlington, must complete the same course requirements, the same number of credits, and the same SOL/end-of-course test requirements that all APS students must earn to receive a high school diploma.


The make-up of the student body at ACHS distinguishes it as different from the other APS high schools: 56 percent of the student body is over the age of 22; 92 percent of the students are classified as "Limited English Proficient" (LEP); and only 3 percent of the students identify themselves as white.

Many amenities which exist for the other high school students in our county do not exist for ACHS students. No school buses are provided for these students; they must either provide their own transportation to school or take public transit. Being located in our neighborhood is ideal for these students as they have easy access to public transportation.

ACHS does not have a cafeteria or health services; these are shared with the Career Center students. Many ACHS students take advantage of the proximity to the Career Center to complete Career and Technical Courses and earn industry certifications.

ACHS is home to highly motivated students who are excited to earn a high school diploma. ACHS has been forced to move several times in the past decade so the students and staff are thrilled to finally have their own school building in our neighborhood.

Given the fact that the school board has approved the superintendent's recommendation to add 800 seats to the Career Center site, it would be interesting to re-evaluate which programs exist on this site next July.



Pre-K (Age 4 by Sept.30)
through 8th grade

Affordable Tuition

Before and After School Program
Small Class Sizes
Many Extracurricular Activities

825 SOUTH TAYLOR STREET
ARLINGTON, VA 22204
703-892-4846
WWW.OSVA.ORG

Mom's Pizza Restaurant

3255 Columbia Pike
703-920-7789/95 / Fax: 703-920-7796
www.momspizzarestaurant.com

Dine with Family & Friends!
Enjoy Salads, Pizza, Pasta Dishes, Greek
Specialties,
Submarine & other Sandwiches



FREE DELIVERY (with a \$10 minimum order)!
—Catering available—
Visit us on Facebook

[Graphic: www.designedtoeat.com]



Get your financial life squared away®

- › Personalized financial planning and advice
- › Retirement income planning and rollovers
- › Investment strategies
- › Education funding solutions
- › Life, home and auto insurance



Ron Peterson, Financial Advisor
2711 Jefferson Davis Highway, Suite 101
Arlington, VA 22202
REPeterson@firstcommand.com
703.418.9360

©2015 First Command Financial Services, Inc., parent of First Command Financial Planning, Inc. (Member SIPC, FINRA), First Command Advisory Services, Inc., First Command Insurance Services, Inc. and First Command Bank. Securities and brokerage services are offered by First Command Financial Planning, Inc., a broker-dealer. Financial planning and investment advisory services are offered by First Command Advisory Services, Inc., an investment adviser. Insurance products and services are offered by First Command Insurance Services, Inc. Banking products and services are offered by First Command Bank. Securities products are not FDIC insured, have no bank guarantee and may lose value. A financial plan, by itself, cannot assure that retirement or other financial goals will be met.

FORM-BASED CODE WORKING GROUP REPRESENTATIVE

Betty Siegel
siegelbr@hotmail.com

SOCIAL CHAIR

Kristy Kelly
KristyKelly14@gmail.com

NEWSLETTER EDITOR & DESIGNER

Claudia Winkler
claudia.winkler@georgetown.edu

NEWSLETTER CONTENT AND ADVERTISING

Open

NEWSLETTER DISTRIBUTION

Ron Peterson
peterson3112@verizon.net

WEBMASTER AND NEIGHBORHOOD EMAIL LIST

Jay Wind
jay.wind@att.net

OPEN CIVIC POSITIONS

Want to get more involved in your neighborhood, learn about issues early, and have a voice in what happens to Arlington Heights? Consider volunteering for one of the two remaining open positions in your civic association:

NCAC ALTERNATE

AHCA seeks an alternate delegate to the Neighborhood Conservation Advisory Committee (NCAC). NCAC is a county-wide group that allocates funds for improvement projects within specific neighborhoods. Representing Arlington Heights in NCAC is crucial for securing funding for improvements to our neighborhood like tree planting and installation or repairs to sidewalks, streetlights, and neighborhood signs. Eileen Janas represents us well as our current delegate to NCAC, but since one individual cannot make every meeting, we and NCAC welcome an alternate to ensure our neighborhood's interests are always represented. To learn more about NCAC and/or represent AHCA as an alternate, please contact Eileen Janas at emjmls@gmail.com, or AHCA President Molly Calkins at molly.calkins.ahca@gmail.com.

AHCA SECRETARY

The secretary position is also open. The secretary's primary responsibilities are to keep meeting minutes and to serve as a voting member of the Executive Committee. If you are interested in serving your neighborhood

as AHCA Secretary, please contact President Molly Calkins at molly.calkins.ahca@gmail.com, or Vice President Evan Farley at pinstriper4@yahoo.com.

The 2017 Arlington Police, Fire, and Sheriff Block Party will take place on Saturday, August 26, at Kenmore Middle School at 200 South Carlin Springs Road.

The Arlington County Police Department (ACPD) has hosted the party the past two years, and this year we are joined by the Arlington County Fire Department (ACFD) and the Arlington County Sheriff's Office (ACSO). There will be events for all age groups (see below) as well as free food and drinks.

BEHIND THE BADGE

Participants receive a brief training from police instructors on law enforcement tactics, attend a simulated roll call to gather information, and then play the role of a police officer or sheriff's deputy in two live scenarios.

KIDZONE

KidZone is an area inside the school featuring kid-friendly activities like trying on public safety equipment, making customized buttons, learning about fingerprints, exercising, and playing video games like Need for Speed. This year we have a new attraction called Go Racers which are small go-karts the kids can race through an inflatable course.

DISTRACTED DRIVING SIMULATOR

This event is headed up by Virginia State Police personnel. Participants drive a golf cart through a cone course while being distracted by various methods including the use of special goggles which simulate intoxication.

VEHICLE EXPO

Specialty vehicles will be on display including a police motorcycle, the ACPD Mobile Command Vehicle, the Chooser Cruiser, a SWAT Armored Personnel Carrier,

ARLINGTON POLICE, FIRE, AND SHERIFF BLOCK PARTY

Sheriff's Office vehicles, Fire Department vehicles, a United States Coast Guard boat, and several helicopters!

POLICE/SHERIFF K-9 DEMONSTRATIONS

K-9 handlers will discuss and demonstrate some of the capabilities of their canine partners.

POLICE MOTORCYCLE DEMONSTRATIONS

Motorcycle officers will demonstrate some of the riding skills needed to perform their work.

BICYCLE REGISTRATION

This free service registers bicycles with the county so it is possible to identify and recover them if they are stolen.

CHILD SAFETY SEAT INSPECTION

A certified child safety seat inspector will verify that child safety seats are properly installed to best protect children.

INFO TABLES

There will be a variety of county departments and private organizations distributing information and free giveaway items.

INFLATABLE ATTRACTIONS

There will be moon bounces

for children and this year we have added a giant fire department-themed inflatable obstacle course that even adults can enjoy.

MUSIC

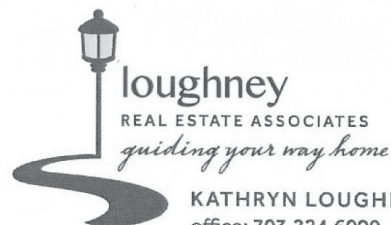
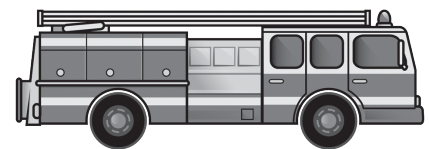
There will be a live DJ providing entertainment.

UNITED STATES PARK POLICE HORSE MOUNTED POLICE

There will be a scheduled appearance by the Horse Mounted Unit of the United States Park Police.

BIKE RODEO

Bike Arlington will be present to provide a bike rodeo for children at the event.



KATHRYN LOUGHNEY MBA, Realtor®
office: 703.224.6000 | mobile: 703.597.9943
KELLERWILLIAMS.REALTY
2101 Wilson Blvd., #100 Arlington, VA 22201
katieloughney@kw.com
WWW.KATIELOUGHNEY.COM

GARDENS GONE WILD

BY REBECCA MASHAW

Henry James once wrote that the two most beautiful words in the English language were “summer afternoons.” Well, Henry—although an American by birth—spent most of his life in England, where 70 degrees is considered “hot.” If he’d lived in Arlington, he probably would have chosen two different words. I’d pick “air conditioning.”

This isn’t the best time of year in the garden, even if you love the heat. Now is when things start looking tattered—either dusty and dried out from lack of rain or beaten down by thunderstorms. The powdery mildew shows up on the phlox and the monarda and the roses are dropping leaves because of black spot.

But boy, the weeds are thriving! The heat brings out some of our toughest, most persistent weeds, just when most of us would really rather not have to grub around under the azaleas to dig them out or cut them back.

It’s a worthwhile chore, however. When pokeweed, for example, is a small plant it comes up easily, especially after a rain. Let it bloom and then produce its ornamental berries, and digging it up becomes a much tougher task.

The vining weeds show up throughout the growing season but now as the heat bears down they really go wild. Porcelain berry, greenbriar, bindweed, Japanese honeysuckle, English ivy, poison ivy—they all start to mature during this time of year, blooming, producing berries and pods, and putting on a serious growth spurt. And most of them are VERY hard

to eradicate once they get well established.

Bindweed is particularly evil. It hides under shrubs and crawls up the stalks of ornamental perennials, disguising itself until one day, finally, you see it. The great garden writer for the *Washington Post*, Henry Mitchell, wrote that gardeners in his home territory called the plant “the devil’s guts” because the roots were so deep and tough.

Frankly, with many of these vines the best thing to do is starve them to death. You may never get up all the rootlets of bindweed or greenbriar, but if you keep cutting the plant off at ground level, it can’t photosynthesize and eventually will run out of food. (So I hear. I’m still trying to starve bindweed that has been here since we moved in 23 years ago.) The main thing is not to let them get out of control. Even if you just yank out a tendril here and there as you drag from the car to the relief of your air conditioned house, you’ll be making a bit of headway against these bullies of summer.

Another weed to watch for is purslane. The low-growing succulent is spreading rapidly now, often in sidewalk cracks and along driveways. It’s not particularly vicious (it doesn’t choke out your pampered garden plants) and it has another very positive quality. You can eat it. It’s actually a very healthy little microgreen with lots of antioxidants. So pause and pull a little on the way in the house to add to your salad at dinner. You’ll need your vitamins to take on the bindweed.



PORCELAIN BERRY VINE



BINDWEED INSIDE HEDGE



PURSLANE

CAREER CENTER SITE TO GET MORE CROWDED

BY MOLLY CALKINS, AHCA PRESIDENT

On June 15, the School Board voted 4 -1 to construct more than 800 new high school seats at the already crowded Career Center site. A smaller number (around 500) will also be added to the Education Center site at Washington-Lee High School in North Arlington. Despite widespread support within both Arlington Heights and the whole county for a fourth comprehensive high school, and our neighborhood's willingness to have the Career Center site turned into a comprehensive high school, the School Board nevertheless voted to add interim seats to accommodate yet more commuter students, without amenities of a full high school such as sports fields, pool, and performing arts facilities. The only School Board member who voted against the plan for more interim seats was James Lander, who favored adding all 1,300 new seats to the Ed Center, instead of splitting up the seats and funds between two sites. School Board Chair Nancy Van Doren ignored the needs of our Career Center campus while looking out for the North Arlington campus. She stated, "At the Ed Center, I'm very interested in making sure that we do find the field space, the recreational space, and the performance spaces, as those are the most limited of the three comprehensive high schools."

The Career Center site—already home to three different high schools and one elementary school and slated to grow by 1,000 high school seats (including additional seats planned for Arlington Tech)—lacks sports fields, a pool, and a performance space, and the School Board will continue to withhold such facilities even after more high school seats are crammed into the site, while ensuring the North Arlington site (with fewer seats added) enjoys such amenities. Once again, Arlington Heights gets all the burdens of school construction without the benefits.

Plans for the Career Center will have to be approved by the County Board. This will be a topic of discussion with County Board member John Vihstadt, who will be a guest at our August 8 civic meeting. Come join the conversation.

2017 AHCA MEMBERSHIP

Your membership helps support the Arlington Heights Civic Association's activities, including social events like the Halloween Party and publication of this newsletter. Members receive voting rights on issues presented to the association. Memberships should be renewed annually.

Individual/Family Memberships are \$20.

Business Memberships are \$25. Please complete this form and send with your check made out to AHCA to the following address:

Arlington Heights Civic Association
P.O. Box 40311, Arlington, VA 22204

Name _____

Address _____

Home Phone _____

Email _____



JOHN KOZYN M.A., REALTOR
Licensed in Virginia & the District
202-288-6026 - MOBILE
703-524-2100 - OFFICE
703-524-9014 - FAX
jkozyn@cbmove.com

4500 Old Dominion Drive
Arlington, VA 22207



www.johnkozyn.com
Operated by a subsidiary of NRT LLC



Established 1938

Doctors' hours by appointment

FREDERICK B. JONES, D.V.M.
G. KAY YOUNG, D.V.M.
CHRISTOPHER M. LOSS, D.V.M.
BHARATHI R. JONES, D.V.M.
KATHARINE L. HOLDER, D.V.M.
JULIE A. DUERLER, D.V.M.

2624 Columbia Pike
Arlington, VA 22204
Telephone: (703) 920-5300
Fax: (703) 685-8860
www.myarlingtonvet.com

NEW ELEMENTARY SCHOOL UPDATE

BY GRETCHEN KEARNEY, AHCA APPOINTEE TO BUILDING LEVEL PLANNING COMMITTEE

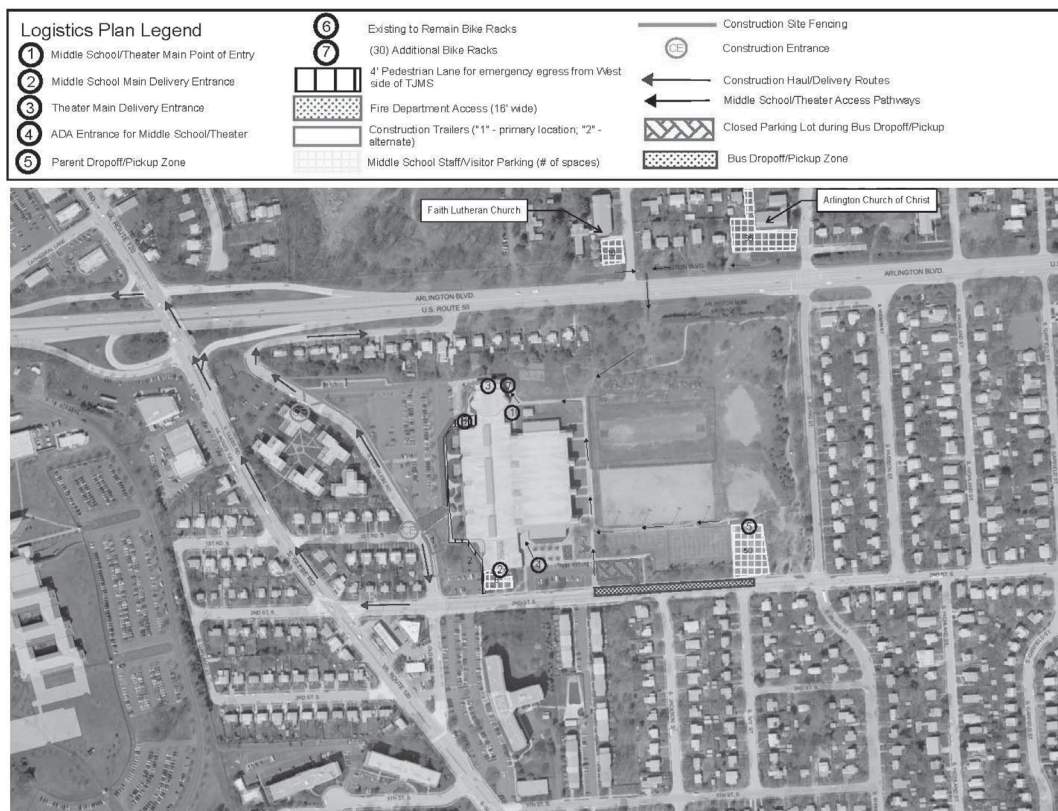
As you've probably seen by now, construction began on the new elementary school at TJ Middle School on July 24. The parking lot on the west side of the building is fenced off; no parking is allowed in that lot. Teacher and staff parking is now in the parking lot east of the tennis courts. Please note the parking restrictions there during daytime hours.

When school begins September 5, bus drop off will be located along 2nd Street by the tennis courts. During pick up and drop off, the half of the Community Center parking lot adjacent to the tennis and basketball courts will be closed.

The next step is to obtain the Excavation, Sheet piling & Shoring permit so they can start excavation of the two story underground garage. The complete anticipated construction schedule is published below.

If you have any questions or concerns as construction moves forward, please let me know at gretchenkearney@gmail.com.

ACTIVITY ID	DESCRIPTION	EARLY START	EARLY FINISH
1440	Submit Civil Engineering Plan		4/24/17
1550	Submit Full Building permit		5/10/17
1950	Submit LDA permit		6/9/17
1870	Submit Excavation, Sheet piling & Shoring permit		6/26/17
2050	Submit Footing to Grade permit		7/3/17
1980	Secure LDA permit	7/14/17	7/21/17
1590	Mobilization	7/17/17	7/24/17
1970	Clearing & Controls	7/25/17	8/15/17
1800	Civil Engineering Plan approval	8/1/17	8/8/17
2040	Secure Excavation, Sheet piling & Shoring permit	7/28/17	8/4/17
2100	Install Shoring Piles	8/17/17	8/30/17
1600	Sheet piling & Shoring/Excavation for Garage	8/31/17	11/15/17
1580	Geothermal Well Fields	9/27/17	11/29/17
2070	Secure Footing to Grade permit	9/29/17	10/6/17
1610	Garage Structure	11/16/17	3/30/18
1570	Secure Full Building permit	10/13/17	10/20/17
1620	School Structure	4/2/18	8/13/18
1930	TJMS Façade and Stairwell work	6/18/18	8/27/18
1640	Interior Build-out	7/19/18	6/3/19
1630	Building Envelope	8/14/18	11/12/18
1660	Sitework	1/24/19	5/8/19
1650	Inspections	5/21/19	6/17/19
1670	Substantial Completion milestone		6/17/19
1680	Punchlist	6/18/19	8/6/19
1890	Final Completion milestone		8/6/19
1690	Move-in	8/7/19	9/2/19
1700	School Opens		9/3/19



NEW ELEMENTARY SCHOOL AT THOMAS JEFFERSON MS
CONSTRUCTION LOGISTICS SITE PLAN